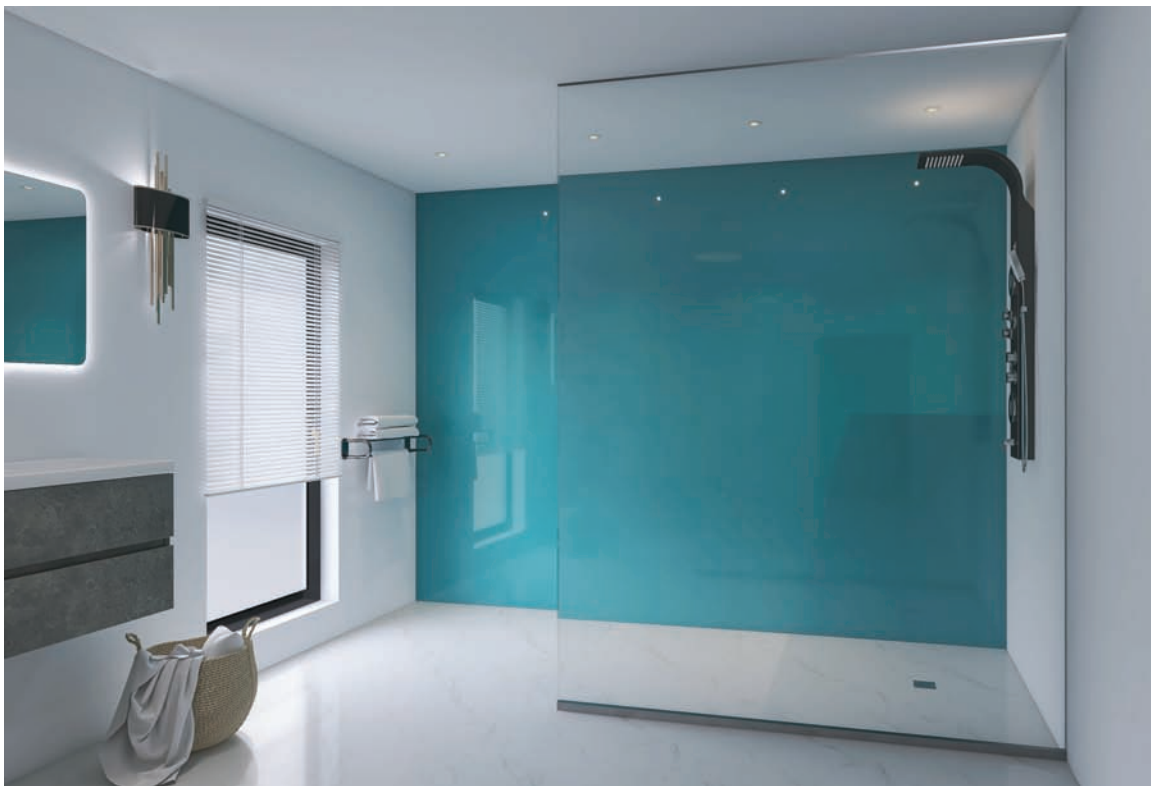


WALL PANELS BY

# PLAZE



INSTALLATION & CARE INSTRUCTIONS



### Tools You May Require

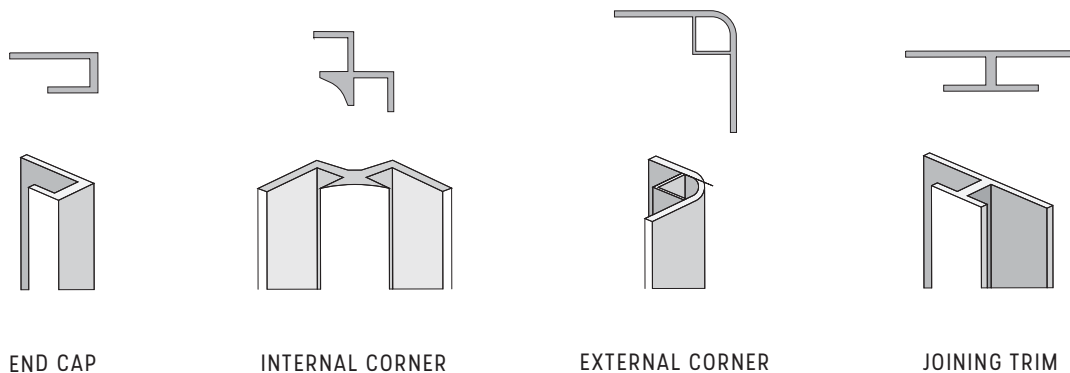
Tape Measure	Circular Saw/Jigsaw	Spirit Level	Marker Pen
Set Square	Silicone Gun & Adhesive	3MM Packers	Cordless Drill
Hole Saw	Masking Tape	Silicone Smoothing Tool	Appropriate PPE

### Important

- Plaze panels should be checked for any damage and/or batch colour consistency, prior to installation.
- The white faced side of Plaze panels must always be installed to the wall.
- Panels should always be stored flat to avoid potential bowing.
- Panels must be in the room they are to be installed in for a minimum of 24 hours before installation, to enable them to acclimatise to the conditions.
- Do not use a knife to open the packaging that your Panel(s) were supplied in.
- Plaze panels will expand and contract under different temperature conditions, ensure adequate expansion gaps are allowed for.

### Optional Trims

Our range of aluminium trims are available in 2.44 metre lengths, and have a polished silver finish. These should be fitted to the wall with Plaze adhesive, and sealed with crystal clear sealant.



### Planning and Preparation

Before beginning installation you may wish to consider the below:

Plaze panels should be fitted to a continuous surface; i.e. existing tiling, chipboard, plasterboard, tile backer board or similar. This surface should be clean, flat, and secure.

Some surfaces may require treating prior to installation. Tiles should be degreased and porous surfaces should be sealed with a sealer/primer.

Plaze advise that in wet areas the substrate is tanked with Mapei Mapegum WPS (or equivalent) to ensure compliance with building regulations.

Baths and shower trays should already be installed in position, and be sealed in accordance with the manufacturers recommended instructions.

Plaze panels are subject to expansion and contraction during normal use, so allowances should be made for this during installation. If trims are not used, then a 3mm gap should be left between the panel and any adjoining surface/panel. This gap should then be sealed with plaze sealant.

### Cut Outs and Trimming Panels

Plaze panels can be cut with all cutting tools. For best results we suggest you cut with the decorative face upwards, and select the finest toothed blade available to you.

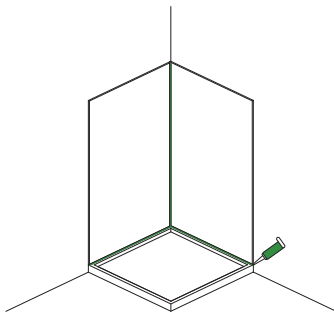
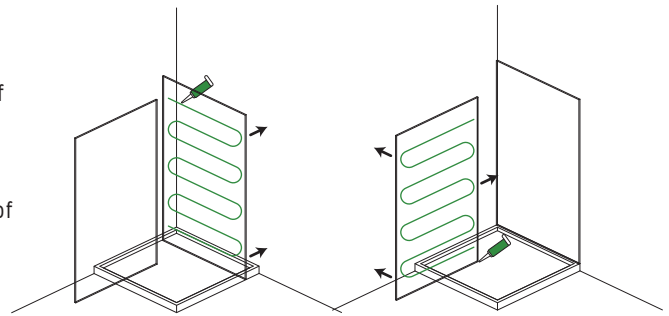
To create shaped cut outs, drill holes in the corners of your required shape, and then cut between the holes with a jigsaw using a fine toothed blade.

You should ensure any cut outs allow 3mm around any obstacle to allow for expansion.

### Applying Adhesive

The adhesive should be applied in a minimum thickness of 8mm beads in horizontal lines 100mm apart direct to the panel, ensuring there are also beads around any cut outs.

Use 3mm packers, to ensure the gap is equal at the base of the panel. You should fit the panel onto the wall within 15 minutes of applying the adhesive. Using a straight edge, apply even pressure across the panel to ensure a level, uniform finish.



### Sealing Up

Using the sealant, seal the base of the panel, ensuring that silicone is forced into the void, and then finish with a coved finish. The clearance gap of 3mm around the cut outs should be fully filled with sealant.

### Maintenance

Plaze panels can be cleaned with; a microfibre cloth, warm water, and a non-abrasive mild detergent. Scouring powder or similar products should not be used.

Limsecal residue may be removed using a soft cloth and a 10% solution of citric acid, household white vinegar or lime juice. Commercial limescale removers are not recommended.

### Hints & Tips

Plaze panels are supplied with a protective film on the decorative face this should be left in place until installed. The white backing should not be removed.

When cutting Plaze panels you may find it easier to clamp them to help avoid the panel bouncing.

Our packaging is specifically designed to be reused as a protective sheet during installation.

Offcuts can be used as basin splashbacks or even as wall art.

You can utilise small pieces of double sided tape to help hold your panel in place whilst the adhesive cures.

Ensure you register your panel(s) using the batching sticker from the protective film on our website.

WALL PANELS BY

**PLAZE**

0121 667 7307  
INFO@PLAZE.CO.UK  
WWW.PLAZE.CO.UK

1801 PERSHORE ROAD  
BIRMINGHAM  
WEST MIDLANDS  
B30 3DN